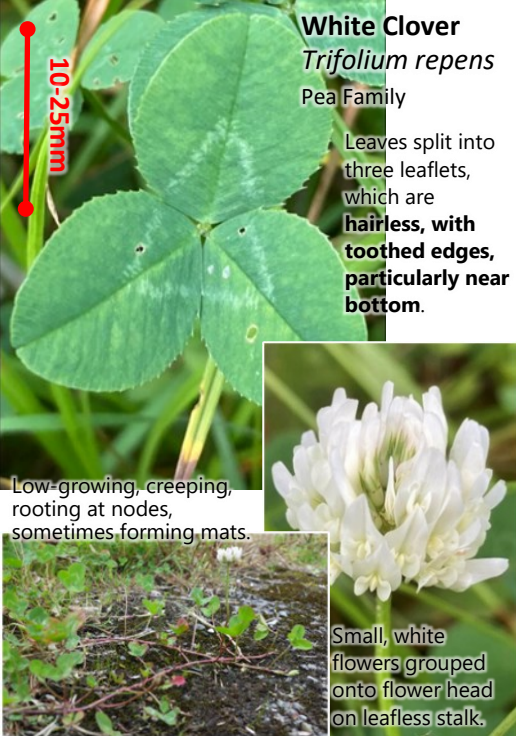


**White Clover**  
*Trifolium repens*  
Pea Family

Leaves split into three leaflets, which are **hairless, with toothed edges, particularly near bottom.**

10-25mm



Low-growing, creeping, rooting at nodes, sometimes forming mats.

Small, white flowers grouped onto flower head on leafless stalk.

**Red Clover**  
*Trifolium pratense*  
Pea Family

10-30mm



Low-growing, upright, not rooting at nodes. Leaves split into three leaflets, **hairy, with untoothed edges.** Small, pink-to-purple flowers, grouped into flower head on stalk which often has leaves below flowers.

**Yarrow**  
*Achillea millefolium*  
Daisy Family

50-150mm



Upright plant, up to 50cm. Overwinters as rosettes of leaves hugging the ground. Leaves hairy, feathery, deeply cut to middle. Compound flower heads white, (or pink), in dense clusters.

**Daisy**  
*Bellis perennis*  
Daisy Family

Leaves in a rosette, up to 5cm, spoon-shaped with blunt tip and few blunt teeth. Leafless, hairy flower stalk.

Compound flower head with white 'petals' (ray florets) and yellow disc florets

20-50mm



Text/images by Laura Moss/Yusef Samari, adapted from 'Big Meadow Search'.

**Get To Know Plants!**

Plants are fascinating wildlife in themselves, as well as supporting all life on land by harvesting energy from sunlight! This basic intro sheet features 16 common plants that you can find almost anywhere, from lawns to playing fields to pavement cracks.

Make sure to check the plant against the description, even (especially) when it looks a match. Further resources to take your interest forward are listed on the back of this sheet. A x10 hand-lens is useful to see some plant ID features.

Recording:  
Recording wildlife is vital for conservation, and fun!  
**West Wales Biodiversity Information Centre** is the **Local Environmental Records Centre** for Carmarthenshire, Ceredigion and Pembrokeshire. We gather wildlife records into one place to be used for local conservation and provide training and support to recorders.  
Submit records to: [record.wwbic.org.uk](http://record.wwbic.org.uk); from your phone using the LERC Wales app, or download a spreadsheet from our website and send it to us.



**WEST WALES BIODIVERSITY INFORMATION CENTRE**  
CANOLFAN WYBODAETH BIOAMRYWIAETH GORLLEWIN CYMRU

**Dandelion**  
*Taraxacum*  
Daisy Family

Variable complex of over 230 microspecies. Low growing.

Leaves in rosette, 2-20cm, green, thin, **hairless**, deeply toothed. **Leaf edges without prickles. Teeth usually end in point and curve backwards away from leaf.**

Stem leafless, **unbranched**, hollow, hairless, bleeds white latex. Large, solitary yellow flower head. Beaked seeds with plume of white hairs.



**Cat's-ear**  
*Hypochaeris radicata*  
Daisy Family

Short to medium plant. Leaves up to 20cm, in rosette, green, stiff, **hairy**, with blunt, rounded lobes.

Stem leafless, often **branched**, hollow, hairless, bleeds white latex. **Small, solitary scale-like bracts, interspersed along stem (a).**

Yellow dandelion-like flower head, often multiple heads on one plant.



(a)

**Meadow Buttercup**  
*Ranunculus acris*  
Buttercup Family

Usually upright plant growing to 1m tall. No creeping runners.

Leaves deeply cut into 3-to-5 linear, pointed lobes, with pointed teeth.



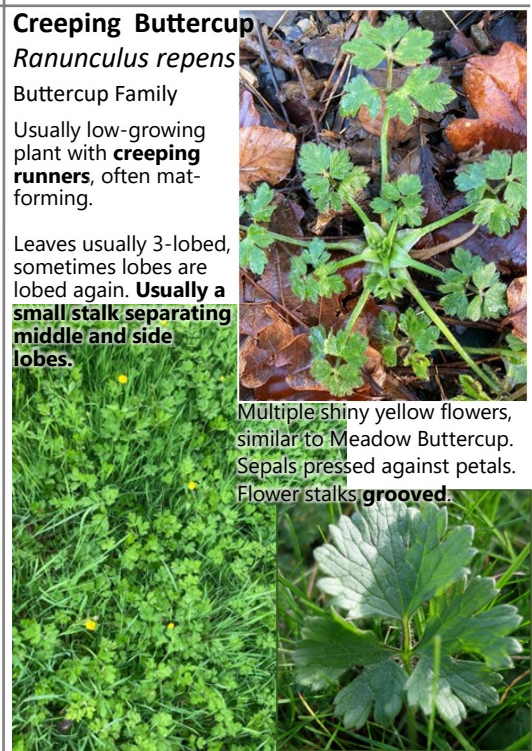
Multiple, shiny, yellow flowers with 5 petals and 5 sepals. Sepals pressed against petals. Flower stalks **not grooved.**

**Creeping Buttercup**  
*Ranunculus repens*  
Buttercup Family

Usually low-growing plant with **creeping runners**, often mat-forming.

Leaves usually 3-lobed, sometimes lobes are lobed again. **Usually a small stalk separating middle and side lobes.**

Multiple shiny yellow flowers, similar to Meadow Buttercup. Sepals pressed against petals. Flower stalks **grooved.**





## Lesser Celandine

*Ficaria verna*

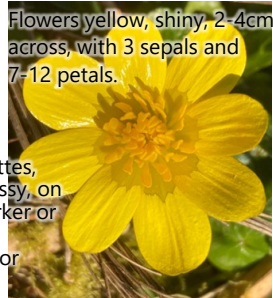
Buttercup Family

Low-growing plant.

Leaves up to 4cm, in rosettes, heart/ kidney shaped, glossy, on long stalks, often with darker or lighter blotches.

Leaf-stalks with two interior channels (a).

Flowers yellow, shiny, 2-4cm across, with 3 sepals and 7-12 petals.



## Ribwort Plantain

*Plantago lanceolata*

Plantain Family

Low-growing plant with raised flower stalks.

Leaves in rosette, linear strap-shaped, hairy, up to 30cm long with 3-5 prominent, parallel veins.



Tiny cream flowers with long, protruding stamens grouped together on elongated flower head on top of long stalk.



## Cleavers

*Galium aparine*

Bedstraw Family

Upright, sometimes sprawling and scrambling plant, very variable in height, covered in tiny hooked hairs that stick to clothing. Square stem.

Leaves in whorls of 6-8, with point at tip and forward-facing prickles (best seen with hand-lens).

Small white flowers with 4 petals. Fruits with hooked hairs.



## Common Mouse-ear

*Cerastium fontanum*

Campion Family

Short plant, low-growing and often sprawling.

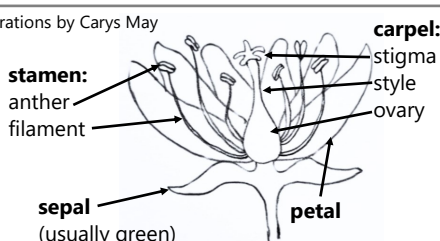
Leaves hairy, oval, up to 25mm, in opposite pairs, often clasping stem and at right angles to each other moving up stem.

Whole plant hairy with no gland-tipped hairs (best seen with hand-lens).

White flowers with 5 notched petals to 5mm, 5 sepals similar length to petals and with silvery, translucent margin. 5 styles, 5 stamens.



Illustrations by Carys May



Plants show an amazing variety of form and structure. An idealised diagram of a flower is above and of a whole plant below, but these vary in all sorts of ways! Related plants are grouped into families with similar flower structures, reflecting their shared heritage.

### Taking It Further

#### Guidebooks:

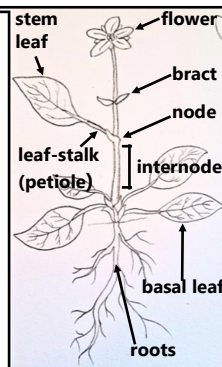
- Francis Rose: The Wild Flower Key
- Collins Wild Flower Guide
- Harrap's Wild Flowers

#### Organisations

- Botanical Society of Britain and Ireland (BSBI)
- Plantlife
- Wild Flower Society

#### Projects

- Big Meadow Search (also a book!)
- National Plant Monitoring Scheme



## Common Chickweed

*Stellaria media*

Short, low-growing plant. Often bushy. Leaves usually hairless, rounded-oval, upper stalkless, lower stalked, in opposite pairs.

Stem rounded, usually with single line of hairs running up it that switches sides with each segment (a).

Small, white flowers with 5 deeply notched petals, each 1-3mm long, hairy green sepals 3-5mm long, 3-8 stamens, anthers red-violet.



## Herb-robert

*Geranium robertianum*

Geranium Family

Short to medium, bushy plant, variable in size.

Stem hairy, branched, often red. Leaves deeply cut into 3-5 lobes which themselves are deeply cut.

Strong smell when rubbed. Red-tipped glandular hairs on leaf-stalks.



Flowers usually pink, 5 petals, each up to 14mm. Orange or purple anthers.

## Common Sorrel

*Rumex acetosa*

Dock Family

Upright plant growing to 120cm.

Leaves hairless, glossy, up to 14cm long, with lobes at rear of leaf pointing backward toward stem, to give arrow-shape appearance.

Flowers/ fruits reddish, dangling.



## Creeping Cinquefoil

*Potentilla reptans*

Rose Family

Crawling, creeping plant with long, pink runners that root at nodes.

Leaves up to 7cm across, split into 5 leaflets, with toothed edges.

Flowers yellow, 10-25cm across, with 5 petals and many stamens.

